

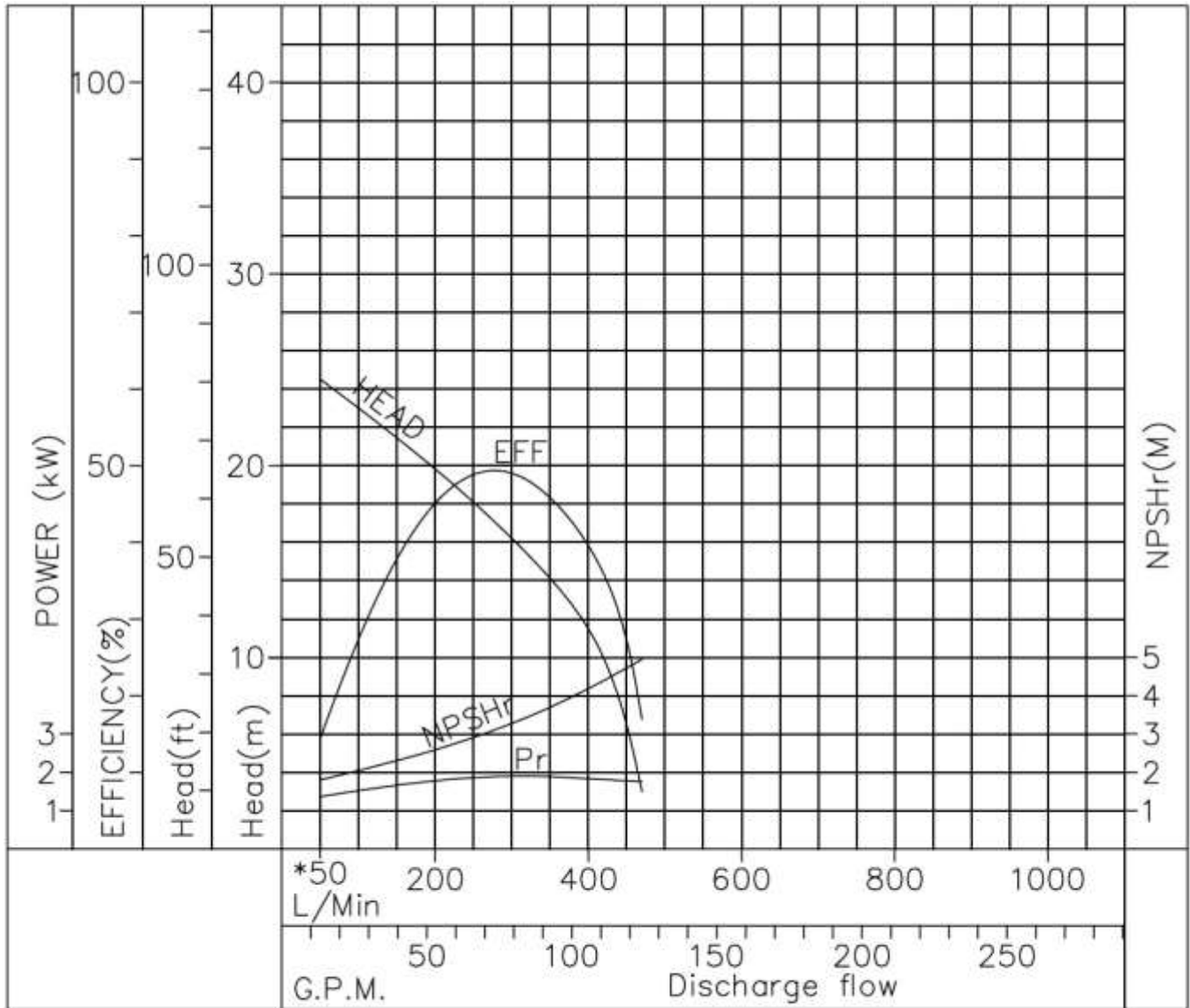
Performance Curve

SG : 1.2
 REF No. A3400202
 Frequency : 60Hz

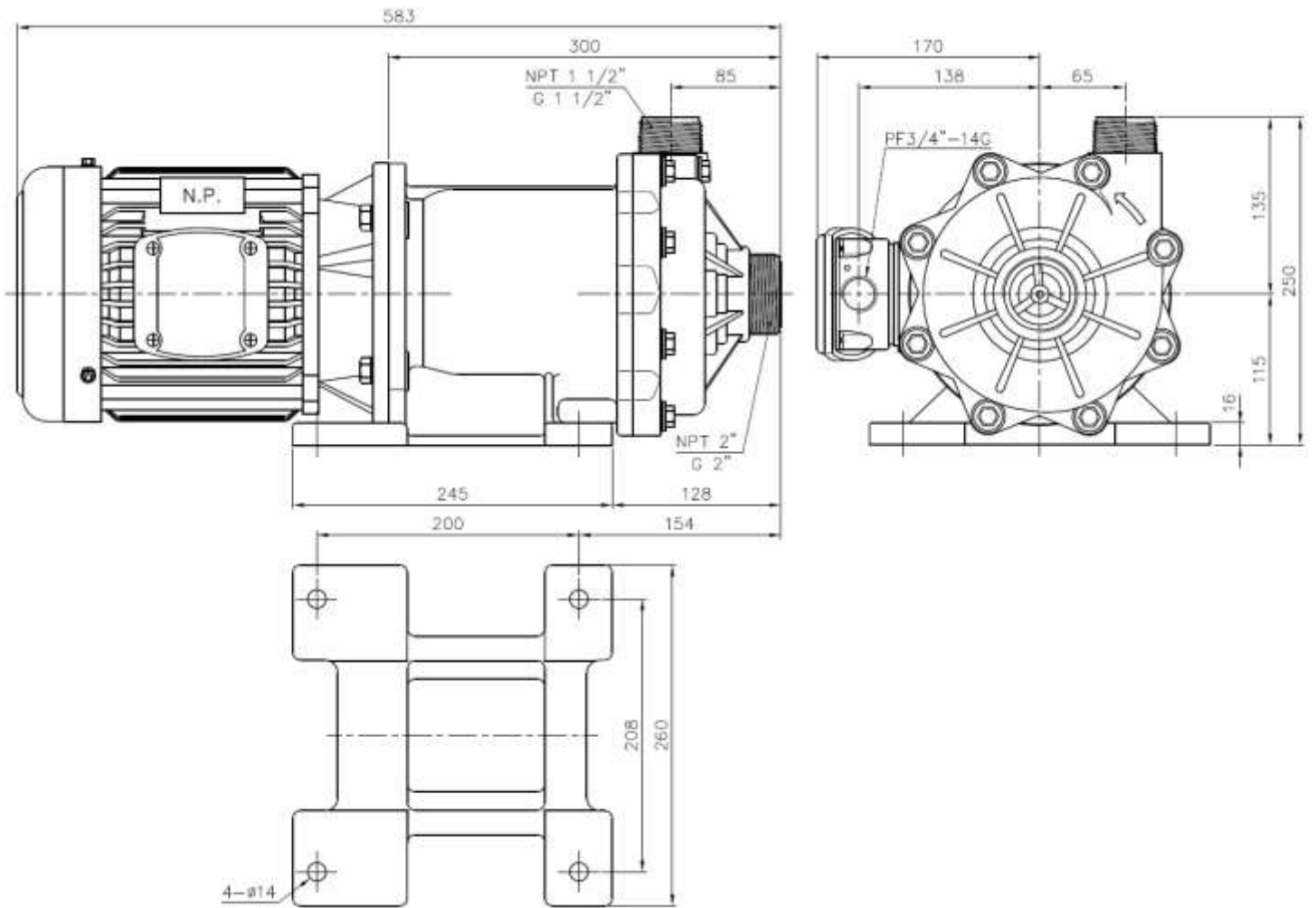
MODEL: NH-403PW-F(L)

IMPELLER DIA : 111 mm

	PUMP						MOTOR
	Discharge Capacity	Discharge Gauge Head	Suction Gauge Head	Equivalent Velocity Head	Total Head	Pump Efficiency	Power Requirement
	L/MIN	M	M	M	M	%	kW
1	0	26.0	0	0	26.0	0	1.20
2	330	15.0	0	0	15.0	47.5	1.90
3	400	11.5	0	0	11.5	42.6	1.76
4	470	3.0	0	0	3.0	13.9	1.80
5							



- NOTE: 1. Specified point 15.0 m at 330 l/min
 2. Rated speed 3440 R.P.M.
 3. Temperature range 0 – 90°C
 4. Motor power 2.2 kW



DIMENSION TOLERANCE : JIS 16 CLASS

		APPROVED		MDL, NAME		NH-402PW	NH-403PW
UNIT	MM	CHECK	08 12 11	DWG, NAME		NH-402PW-F	NH-403PW-F
SCALE	7:20	DESIGN	09 23 98	DWG, NO.		NH-402PW-K	NH-403PW-K
EDITION	3	DR.BY	08 12 11 FANNY			INSTALLATION DRAWING	
						B1423445	A3