

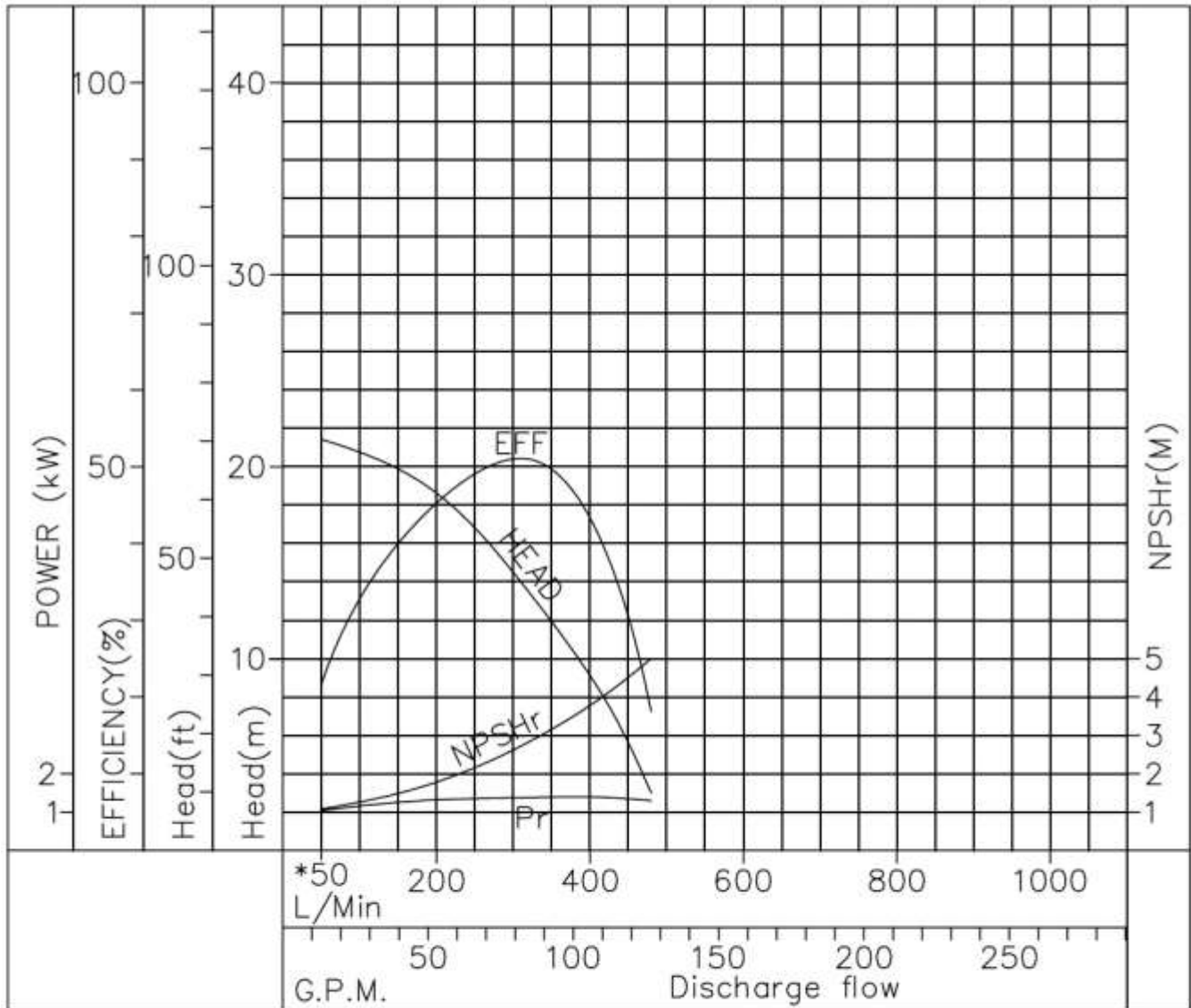
Performance Curve

SG : 1.1
 REF No. A3400182
 Frequency : 60Hz

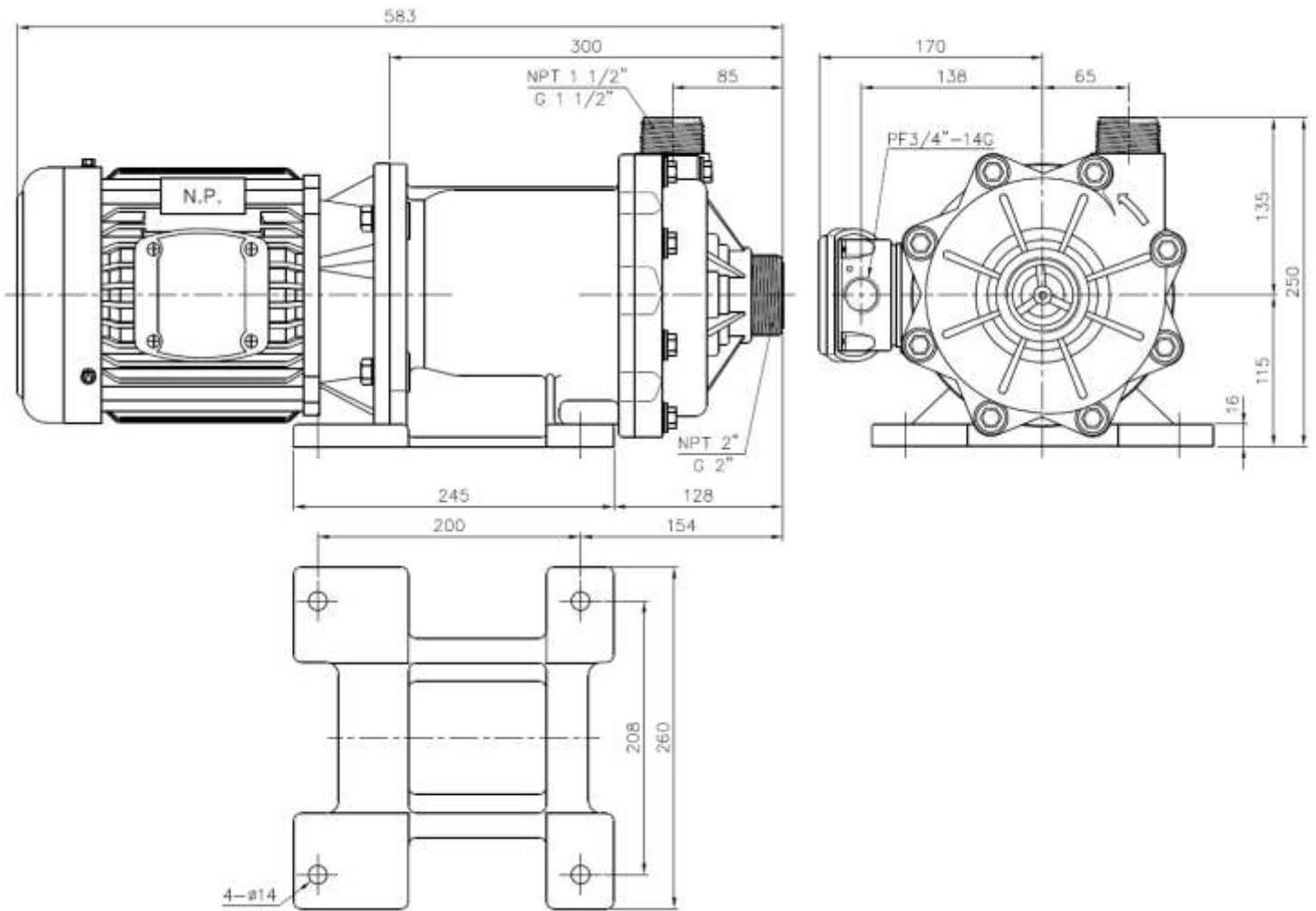
MODEL: NH-402PW(L)

IMPELLER DIA : 112 mm

	PUMP						MOTOR
	Discharge Capacity	Discharge Gauge Head	Suction Gauge Head	Equivalent Velocity Head	Total Head	Pump Efficiency	Power Requirement
	L/MIN	M	M	M	M	%	kW
1	0	22.0	0	0	22.0	0	0.91
2	180	19.2	0	0	19.2	43.3	1.30
3	320	13.5	0	0	13.5	51.0	1.38
4	435	6.8	0	0	6.8	35.2	1.37
5	480	3.0	0	0	3.0	18.1	1.30



- NOTE:
- 1. Specified point 14 m at 300 l/min
 - 2. Rated speed 3440 R.P.M.
 - 3. Temperature range 0 – 70°C
 - 4. Motor power 1.5 kW



DIMENSION TOLERANCE : JIS 16 CLASS

		APPROVED		NH-402PW NH-403PW NH-402PW-F NH-403PW-F NH-402PW-K NH-403PW-K	
UNIT	MM	CHECK	08 12 11	MDL, NAME	
SCALE	7:20	DESIGN	09 23 98	DWG, NAME	
EDITION	3	DR.BY	08 12 11 FANNY	INSTALLATION DRAWING	
				DWG, NO.	
				B1423445	
				A3	