

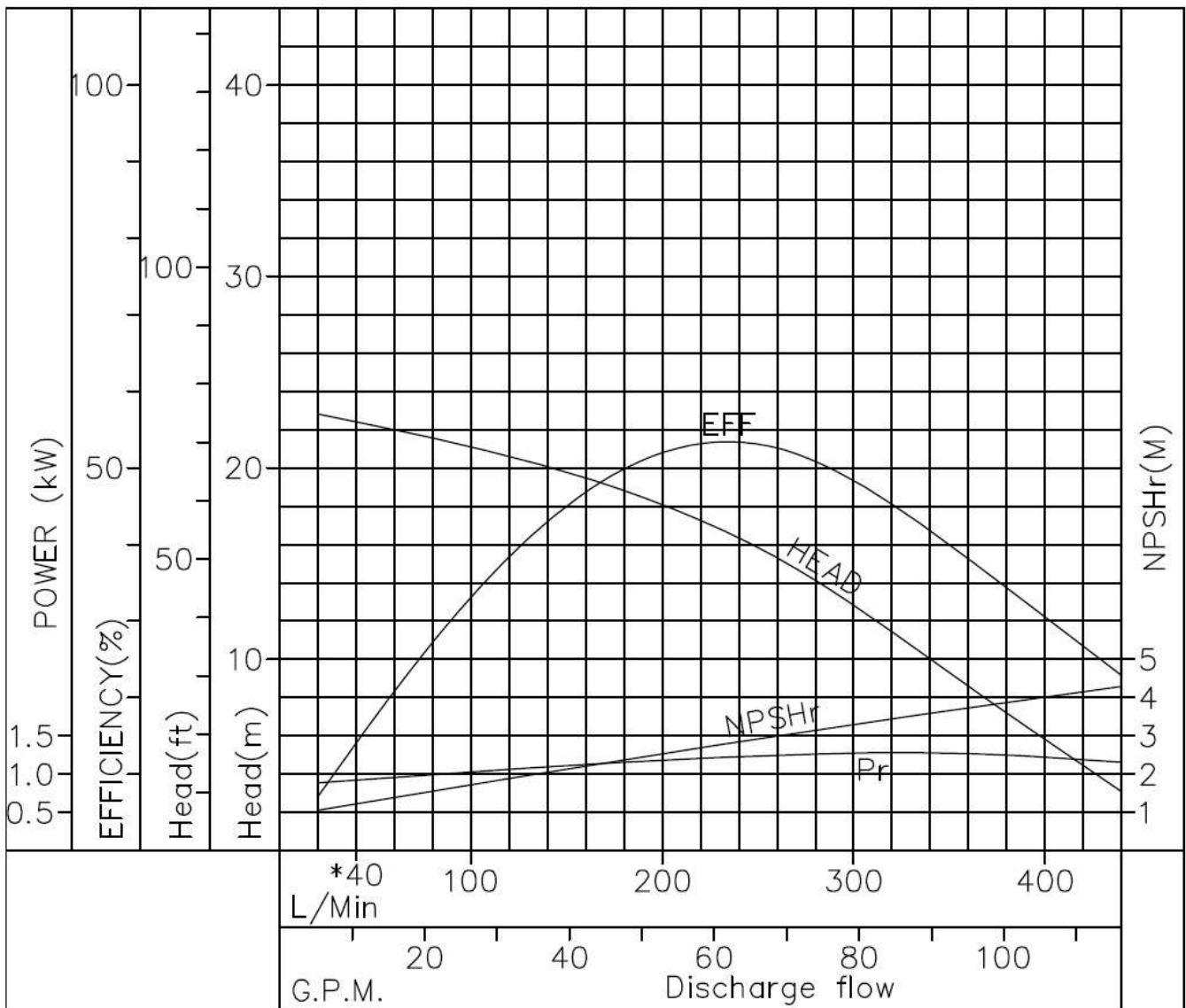
Performance Curve

SG : 1.2
REF No. A3400198
Frequency : 60Hz

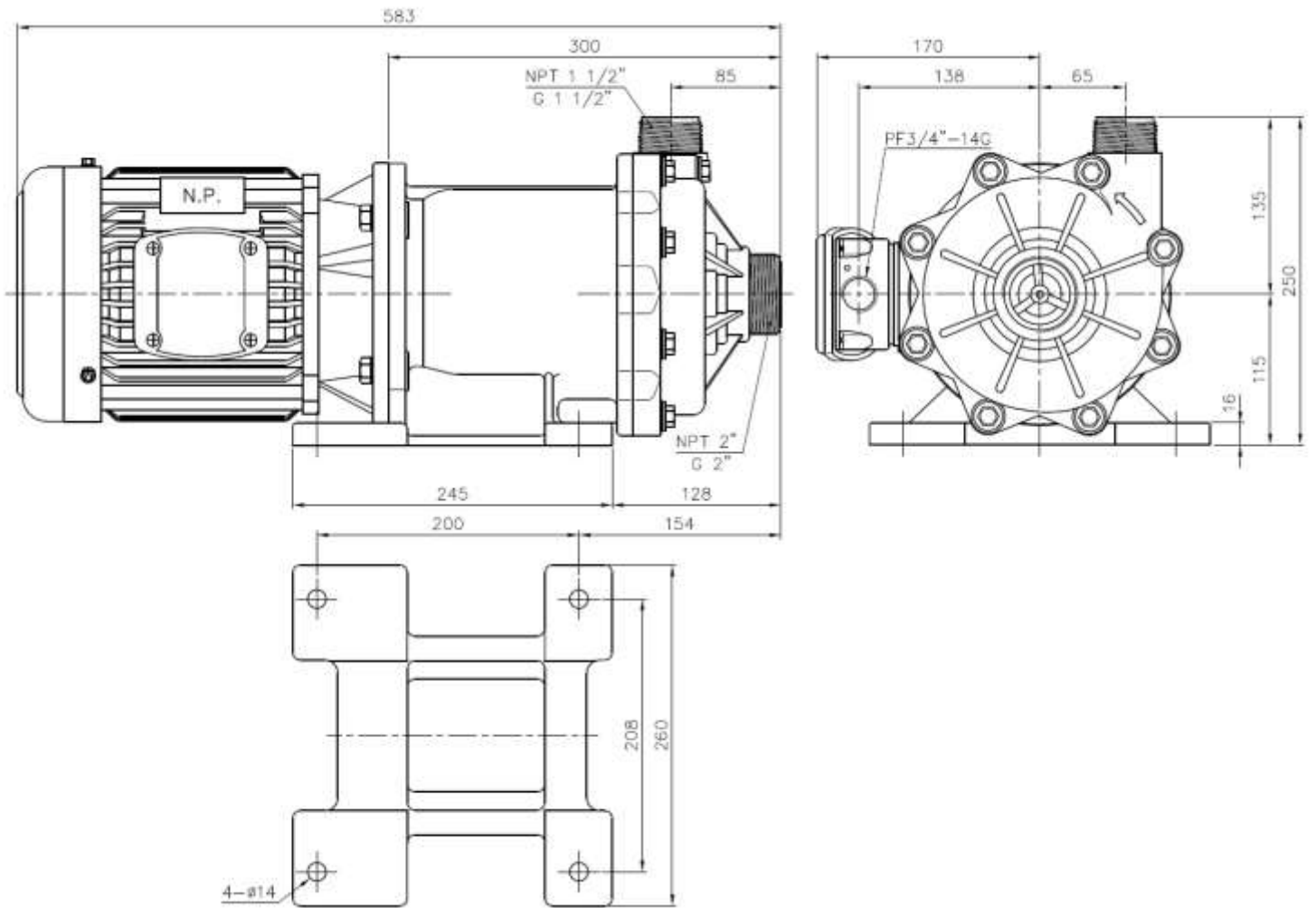
MODEL: NH-402PW-F(L)

IMPELLER DIA : 108 mm

	PUMP					MOTOR	
	Discharge Capacity	Discharge Gauge Head	Suction Gauge Head	Equivalent Velocity Head	Total Head	Pump Efficiency	Power Requirement
	L/MIN	M	M	M	M	%	kW
1	0	23.2	0	0	23.2	0	0.85
2	260	15.5	0	0	15.5	52.6	1.25
3	360	7.6	0	0	7.6	35.1	1.27
4	440	3.7	0	0	3.7	22.9	1.16
5	--	--	--	--	--	--	--



- NOTE:
- Specified point: 15.5 m at 260 l/min
 - Rated speed: 3440 R.P.M.
 - Temperature range: 0 – 90°C
 - Motor power: 1.5 kW



DIMENSION TOLERANCE : JIS 16 CLASS

		APPROVED		NH-402PW NH-403PW NH-402PW-F NH-403PW-F NH-402PW-K NH-403PW-K	
UNIT	MM	CHECK	08 12 11	MDL, NAME	
SCALE	7:20	DESIGN	09 23 98	DWG, NAME	
EDITION	3	DR.BY	08 12 11 FANNY	INSTALLATION DRAWING	
				DWG, NO.	B1423445 A3