

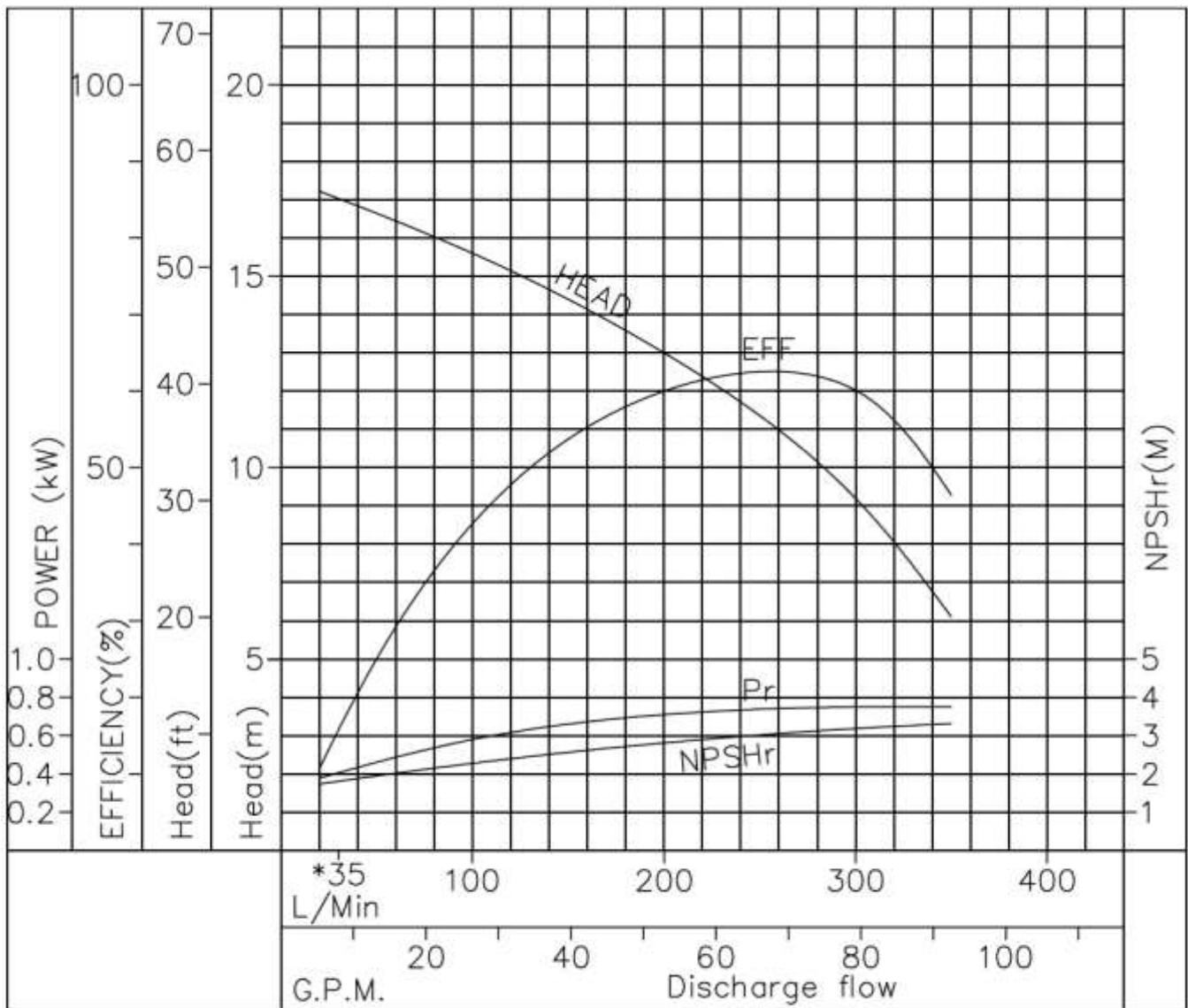
# Performance Curve

SG : 1.1  
REF No. A3400179  
Frequency : 60Hz

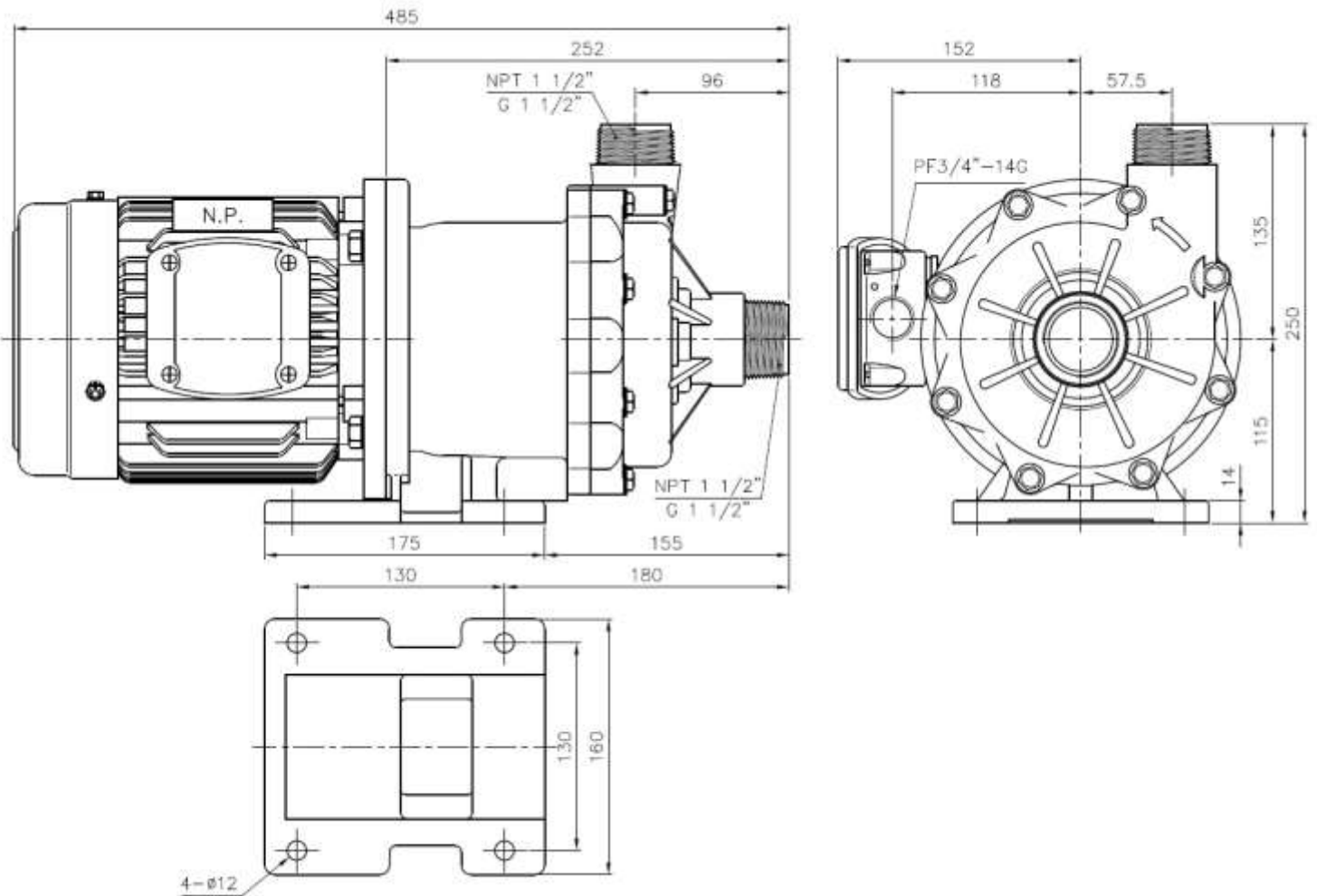
MODEL: NH-401PW(L)

IMPELLER DIA : 96 mm

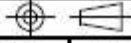
	PUMP					MOTOR	
	Discharge Capacity	Discharge Gauge Head	Suction Gauge Head	Equivalent Velocity Head	Total Head	Pump Efficiency	Power Requirement
	L/MIN	M	M	M	M	%	kW
1	0	17.6	0	0	17.6	0	0.32
2	100	15.2	0	0	15.2	42.7	0.58
3	200	13.1	0	0	13.1	60.1	0.71
4	300	9.2	0	0	9.2	60.0	0.75
5	350	6.1	0	0	6.1	46.4	0.75



NOTE: 1. Specified point 11.5 m at 250 l/min  
 2. Rated speed 3440 R.P.M.  
 3. Temperature range 0 – 70°C  
 4. Motor power 0.75 kW



DIMENSION TOLERANCE : JIS 16 CLASS

		APPROVED		MDL, NAME	NH-401PW	NH-401PW-F
UNIT	MM	CHECK	08 09 11	DWG, NAME	NH-401PW-K INSTALLATION DRAWING	
SCALE	2:5	DESIGN	10 27 98	DWG, NO.	B1413444	A3
EDITION	3	DR.BY	08 09 11 FANNY			